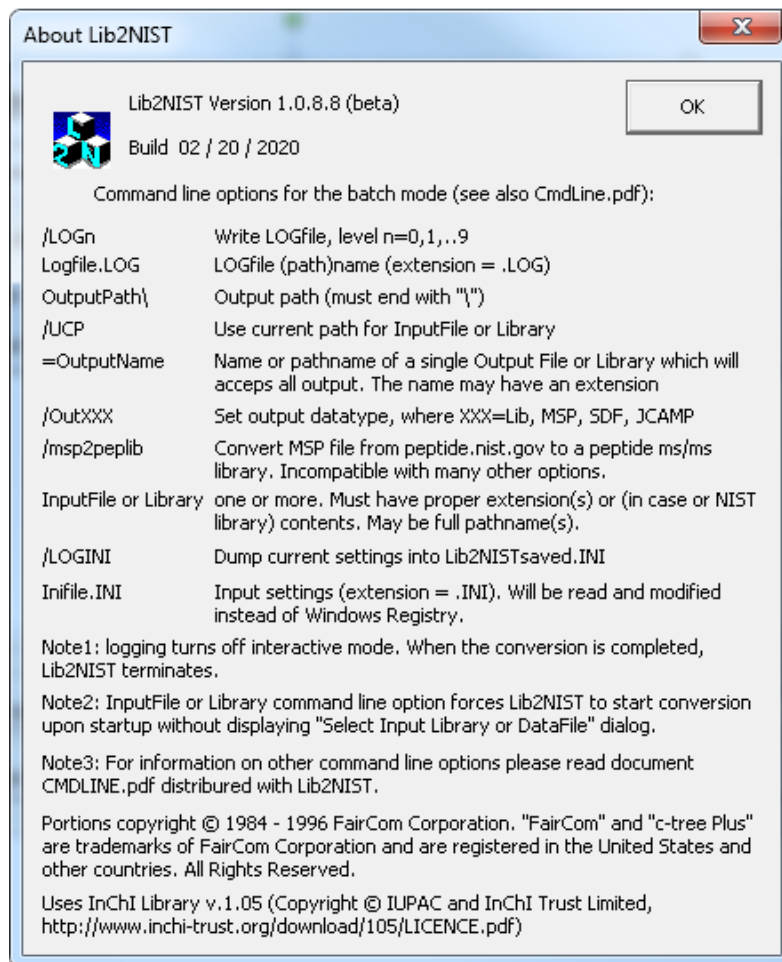


Lib2NIST User Guides and Screen Help (1 of 3)

Screenshot from Lib2NIST Help Screen:



Lib2NIST User Guides and Screen Help (2 of 3)

Screenshot from Lib2NIST from CMDLINE.pdf Document Found with Installation of NIST Search Software:

May 23, 2014

Lib2NIST v1.0.4.38 (beta) command line options

Starting from version 1.0.0.6 (beta), the Lib2NIST library conversion utility can be run from a batch file. This possibility is reserved for advanced users and is not necessary for most conversions.

General Lib2NIST command line options rules:

- Options are separated by spaces.
- Options are not case-sensitive.
- If an option must contain spaces, it should be enclosed in "double quotes".
- Options containing characters equal sign "=" or colon ":" should not have spaces around them.
- Since the command line is read by Lib2NIST from left to right, meaning of an option may be affected by options located to the left from it.
- Variable parts of options described below are in ***Bold Italics***; fixed parts (necessary to recognize options) are in **Bold**.
- Lib2NIST differentiates between options according to the following characteristic features:
 - starting with a slash "/"
 - starting with a slash and containing an equal sign "=" or colon ":" inside
 - starting with an equal sign "=" (an output library or file name)
 - ending with a backslash "\" (an output path)
 - file (path)name with a predefined extension (.INI or .LOG)

COMMAND LINE OPTIONS

The following command line options are recognized. Whenever a file name without the path is used as a command line option, the current path or the default path from the Registry or .INI file is used.

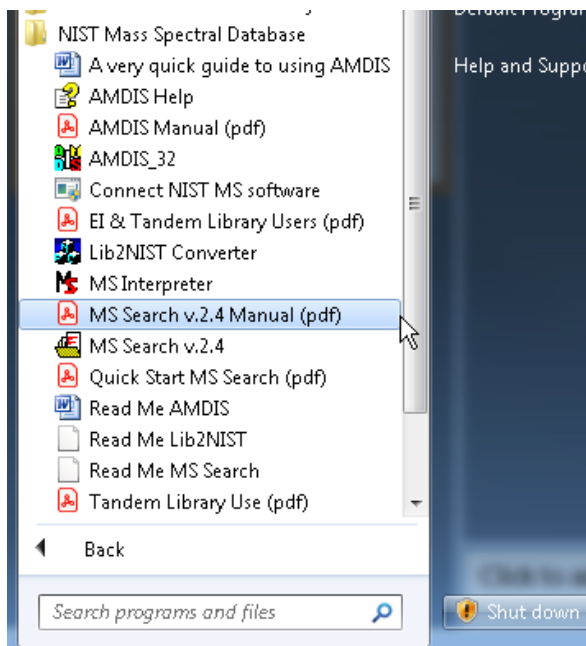
/LOGn (example: /LOG3). Write logfile, details level 3.

- Contents of all dialogs informing the user about errors and warnings are redirected to the logfile. All questions

Lib2NIST User Guides and Screen Help (3 of 3)

Screenshot of User Manual, do a Search for Lib2NIST *within* manual, copy of manual usually installed with software and found in “group listing” in windows, here is a link to most current manual in 2020:

<https://littlesandsailing.wordpress.com/2020/08/20/most-current-user-manuals-for-nist-search-and-amdis/>



**Mass Spectral Libraries (NIST/EPA/NIH EI & NIST Tandem 2020) and
NIST Mass Spectral Search Program (Version 2.4)**
Revised August 2020
For Use with Microsoft® Windows
User's Guide
